

# AVANTE<sup>®</sup>

garage doors

ALUMINUM AND GLASS CONSTRUCTION – MODELS AXU/AX



America's Favorite Garage Doors<sup>®</sup>



*Avante<sup>®</sup>, Dark Bronze (Anodized) Frame with Obscure Insulated Glass*



Avante®, Bronze (Anodized) Frame with Frosted Tempered Glass

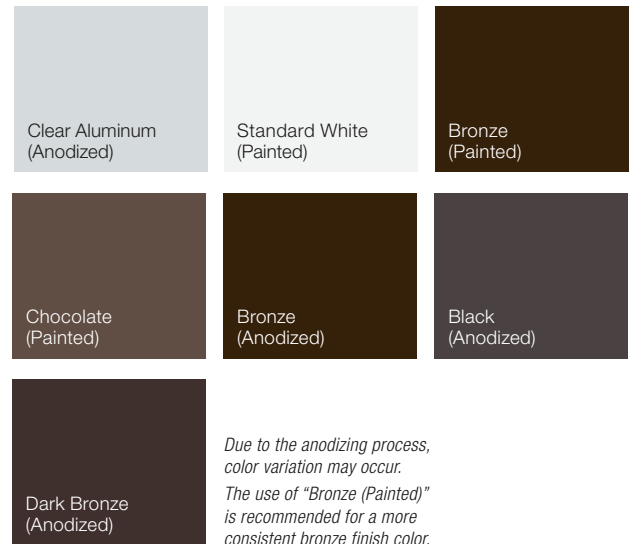
## STYLE AND CONSTRUCTION



- Aluminum frame provides a virtually maintenance-free, long-lasting door.
- Intellicore® polyurethane insulated rails and stiles. (Model AXU)
- R-value 3.8/U-factor 0.86. (Model AXU when glazed with clear insulated glass)
- Many glass and panel options available.
- Section joint seal helps keep out air and water.
- Heavy-duty steel ball bearing rollers with nylon tires provide quiet operation.

\*Doors wider than 14' include built-in reinforcing fin. Standard doors 12' and under do not use built-in reinforcing fin. Usage on widths 12'2" to 14' depend upon glass weight. WINDCODE® doors may vary. Contact your Clopay Dealer for details. Calculated door section R-value is in accordance with DASMA TDS-163.

## FRAME/SOLID PANEL COLOR OPTIONS



## CUSTOM PAINT OPTIONS

Custom colors make Avante® garage doors personal. Choose a Color Blast® finish or RAL Powder Coating to create the perfect door. The only limit is your imagination! See your Clopay Dealer for details.



Model AXU not available with RAL Powder Coat finish.



# AVANTE®

Avante® garage doors are designed with architects, contractors and homeowners in mind. With a sleek aesthetic and section seal, these doors are the perfect choice to modernize any home. Not only can they transform garages, they can also be used as an indoor loft partition or as versatile solarium doors. Many glass options are available to control the degree of light transmission and privacy.

## GLASS/PANEL OPTIONS



Clear Glass\*



Gray Tinted Glass\*



Bronze Tinted Glass\*



Mirrored Glass\*



Obscure Glass\*



White Laminate Glass



Black Laminate Glass



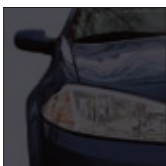
Frosted Glass\*  
(Satin Etched)



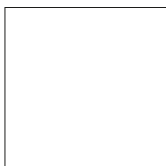
Frosted Acrylic



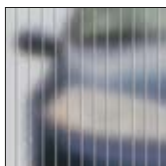
Clear Acrylic



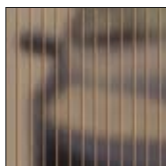
Gray Acrylic



White Acrylic



Clear Polygal™



Bronze Polygal™



Clear Anodized  
(Color-matched to frame)

- Glass available in single pane or insulated (laminated and mirrored glass not available insulated).
- Panels can be aluminum to match the aluminum frame. Glass/acrylic panels may be combined with aluminum panels. Custom glass and colors available.

*\*Glass is tempered.*

*Acrylic windows require special cleaning. Never use products that contain ammonia or petroleum products to clean acrylic. Please visit [www.clopaydoor.com/acrylic](http://www.clopaydoor.com/acrylic) for complete details. See your Clopay Dealer for details. Or for more information scan the code below.*



## WARRANTIES

FINISH  
LIMITED  
**5 YR**  
WARRANTY

HARDWARE  
LIMITED  
**3 YR**  
WARRANTY

## HARDWARE



Attractive color-matched aluminum grip handles.

*Available in all standard color options.*

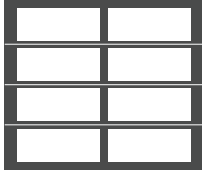
## WINDCODE®

Doors available to meet many regional wind load requirements.

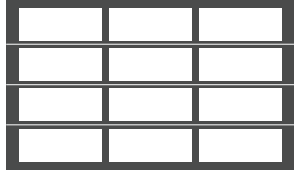
*WindCode® doors over 16' wide may have reinforcement hardware that shows through the glass panels of the door.*

# PANEL CONFIGURATIONS *(Examples of common sizes shown below)*

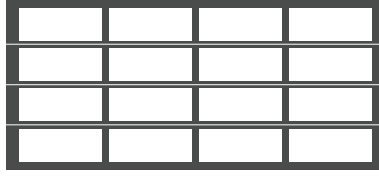
## 6'6" TO 7'0" HIGH DOORS



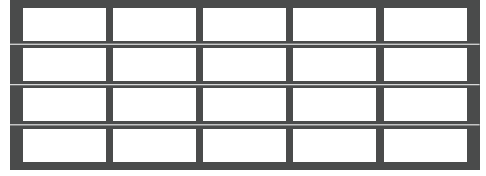
2 Panel  
Up to 9'2" Wide



3 Panel  
9'4" to 13'2" Wide

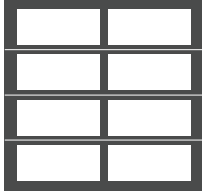


4 Panel  
13'4" to 16'2" Wide

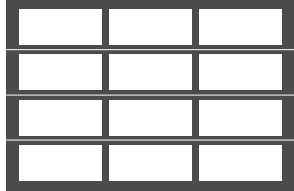


5 Panel  
16'4" to 20'0" Wide

## 7'3" TO 8'0" HIGH DOORS



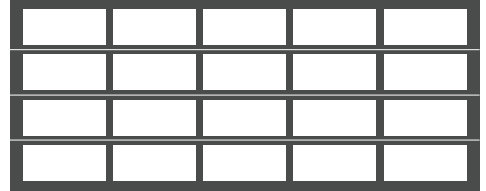
2 Panel  
Up to 9'2" Wide



3 Panel  
9'4" to 13'2" Wide



4 Panel  
13'4" to 16'2" Wide



5 Panel  
16'4" to 20'0" Wide



*Avante®. Black (Anodized) Frame with Frosted Insulated Glass*



Visit [clopaydoor.com](http://clopaydoor.com) or call 1-800-2CLOPAY (225-6729) for more information on Clopay, America's Favorite Garage Doors.

Follow us on



©2022 Clopay Corporation. All rights reserved.

RSDR-AVANTEAXSS-19\_REV0422

imagine



DESIGN YOUR DOOR  
OPEN CAMERA  
AND POINT!